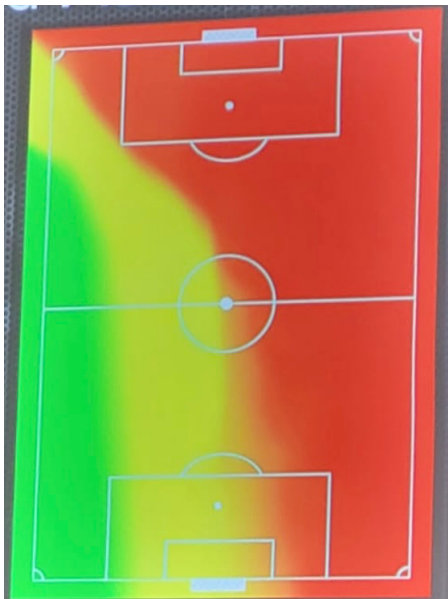


ASSISTANT REFEREE LAW 12 INVOLVEMENT



Green Zone

- You have the same duties as the center referee
- If Law 12 and Fifa considerations are met and the center referee does not see it or does not make the call, it is your call to make
- If the center referee makes the call first, there is no need to raise your flag

Yellow Zone

- If you have a clear view, are in a credible position, and are 100% that Law 12 and Fifa considerations are met, it is your call to make

Red Zone

- If you are 100% certain that Law 12 is met, this is a game-critical decision, and it is a serious and obvious call